



Single Package R-410A Air Conditioner

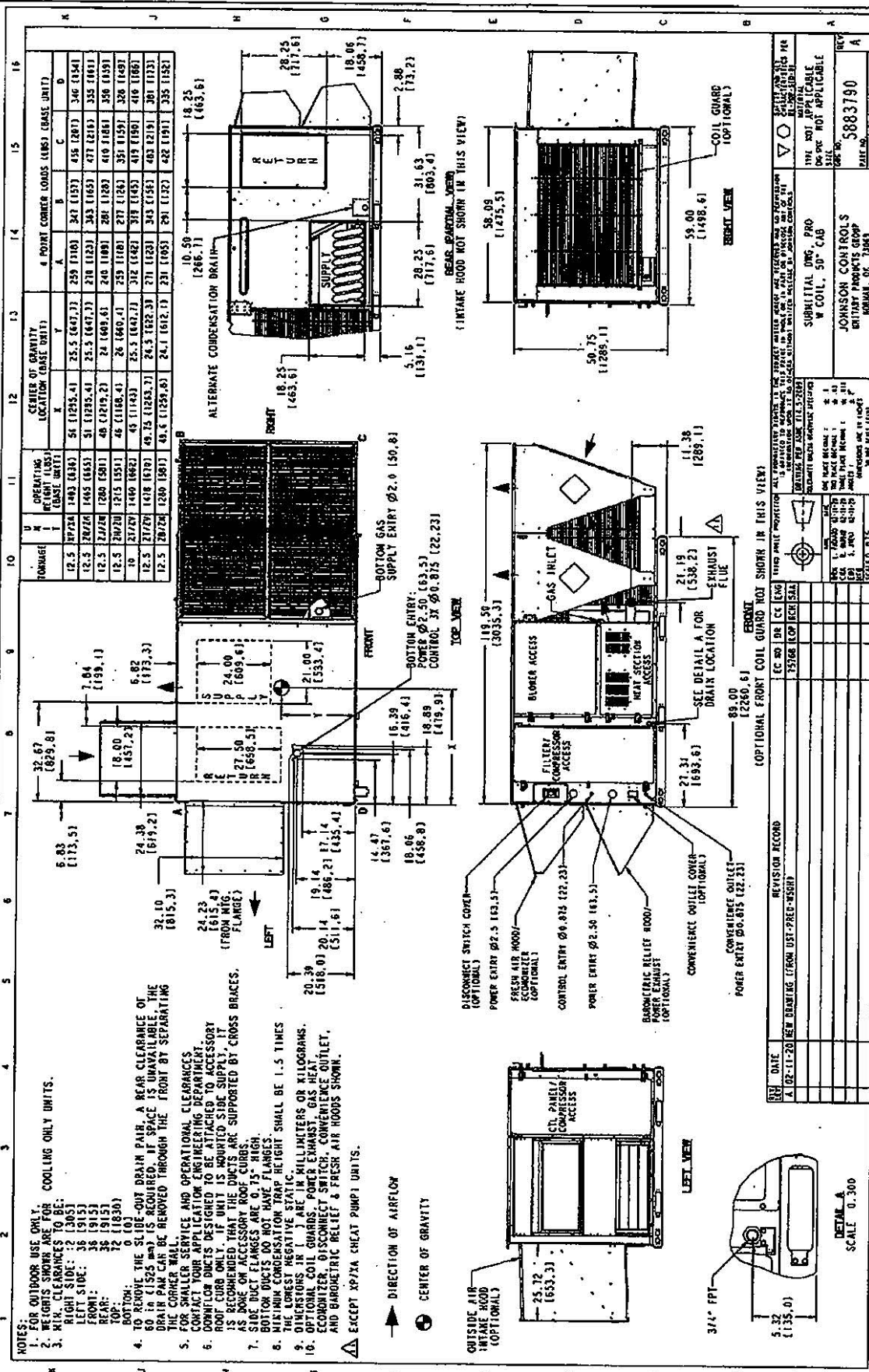
Project Name: D4CG150 Replace

Unit Model #: ZJ150N18R2A1AAA1A2

Quantity: 1

Consolidated Drawing

- NOTES:
1. FOR OUTDOOR USE ONLY.
 2. HEIGHTS SHOWN ARE FOR COOLING ONLY UNITS.
 3. HIGH CLEARANCE TO BE:
RIGHT SIDE: 32 (30S)
LEFT SIDE: 36 (191S)
FRONT: 36 (191S)
REAR: 36 (191S)
TOP: 72 (1830)
BOTTOM: 0 (0)
 4. TO REMOVE THE SLIDE-OUT DRAIN PAIR, A REAR CLEARANCE OF 60 IN (1525 MM) IS REQUIRED. IF SPACE IS UNAVAILABLE, THE DRAIN PAIR CAN BE REMOVED THROUGH THE FRONT BY SEPARATING THE DRAINER SERVICE AND OPERATIONAL CLEARANCES.
 5. FOR WALLER SERVICE APPLICATION, DUCTS MUST BE CONNECTOR DUCTS DESIGNED TO BE ATTACHED TO ACCESSORY ROOF CURB ONLY. IF UNIT IS MOUNTED SLIDE SUPPLY IT IS RECOMMENDED THAT THE DUCTS ARE SUPPORTED BY CROSS BRACE AS DONE ON ACCESSORY ROOF CURBS.
 7. SIDE DUCT FLANGES ARE 0.75" HIGH.
 8. BOTTOM DUCTS DO NOT HAVE FLANGES.
 9. MINIMUM CONDENSATION TRAP HEIGHT SHALL BE 1.5 TIMES THE LOWEST NEGATIVE STATIC.
 9. DIMENSIONS IN [] ARE IN MILLIMETERS OR KILOGRAMS.
 10. REMOVAL OF COIL GUARDS, POWER EXHAUST, GAS HEAT EXCHANGER, DISCONNECT SWITCH, CONVENIENCE OUTLET, AND BAROMETRIC RELIEF & FRESH AIR HOODS SHOWN.
- EXCEPT XPYXA CHILL PUMP! UNITS.



Information is subject to change without notice. Check local codes.