

### **Sword Belt Specifications 2020**

The sword belt shall consist of a 1-11/16 inch wide waist belt with a buckle back flap sewn to the belt. There shall be two belt sizes to encompass most sizes. The belt shall have a metal buckle w/ emblem, a metal buckle clasp receiver, two belt loops (leather keepers) that shall match the belt and a metal post on the buckle emblem end.

- The leather for the sword belt shall be flexible and free from any imperfections affecting its appearance or serviceability. The leather shall be 5.5 to 6.0 ounces in thickness, hand bordered cowhide, strap, and vegetable tanned, leather filled body and drum dyed black throughout. The color shall be black and shall show fair fastness to crocking, staining and perspiration. The thickness of the leather shall be determined by a Woburn gauge or similar accepted standard gauge.
- The belts shall be in the following sizes:
  1. Large
  2. Small
- Large Belt: The overall finished length of the large belt shall be approximately 57 inches long. This shall include a finished belt length of approximately 54 inches with a sewn on 4 inch flap. (see photos 13, 1 & 2)
- Small Belt: The overall finished length of the small belt shall be approximately 48 inches long. This shall include a finished belt length of approximately 45 inches with a sewn on 4 inch flap. (see photos 13, 1 & 2)
- The belt shall have two parallel grooves, approximately 1/32 inch wide, approximately 1/4 inch from each edge of belt, approximately 1-1/8 inch apart from each other running the entire length of the belt. (See photo 12 for groove detail)
- Both the large and small belt shall have 15 holes punched, vertically centered with a horizontal slit pointing away from the buckle end. (See photos 11 & 12 for details) These holes will accommodate the size adjustment post and still hold the post in place during wear.
- The post shall be brass and shall be permanently and rigidly attached through the belt 3/4 of an inch, vertically centered, from the end of the belt. The post ball (top) shall be approximately 5/16 inch in diameter. Overall height of the post is approximately 1/2 inch. The post shall resemble the item shown in photo 3 & 4. Placement of the post is shown in the additional reference photo (R3)
- The flap (photos 5, 6 & 7) shall be 4 inches long by 2-5/16 inches wide at the widest part and 1-7/16 inches (tapered) on the end that attaches to the belt. The flap shall be laid and sewn on over the belt end that is folded over to secure the

buckle receiver. The finished side of the leather flap shall face outward and shall serve as the background for the buckle emblem when the belt is buckled and worn. The finished Flap shall resemble the flap show in photos 5, 6 & 7

- The Buckle Keeper shall be durable, and shall be attached to the left end of the belt so as when the person is donning the Buckle Keeper will be held with the left hand and the buckle emblem held with the right as the Buckle is brought over the keeper and the clasp hooked in to fasten the belt. The Buckle keeper shall resemble the item shown in photo 10. Placement detail is shown in photo 5 & 6.
- The leather belt loops shall be approximately ½ inch wide and match the belt and shall have 2 parallel grooves, 1/2cm apart, running the entire length. See photo 14 for detail.
- The Buckle Emblem belt loop (keeper) and the Buckle keeper shall be die struck brass. The color of the metal components shall be uniform throughout and shall be hand burnished on both sides.
- Finish: A pale, clear synthetic lacquer that shall not affect the color of the components shall be applied. Coating shall be free of air pockets and dust particles.
- The belt flap (Buckle back ground flap) shall be sewn on over the edge of the belt end that is folded over to secure the buckle clasp receiver. Stitching shall be a quality consistent with standard industry standards and durable to stand up to normal wear and tear over a period of several years. Material shall be resistant to moisture damage and stand up to outside wear and weather. Stitching shall withstand heavy duty, prolonged use.

#### Sword Belt Photos

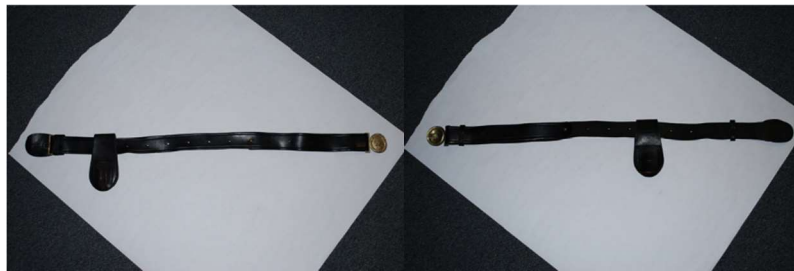


Photo 1

Photo 2

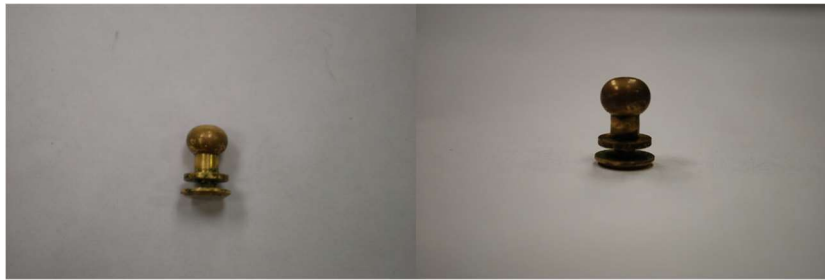


Photo 3

Photo 4



Photo 5



Photo 6



Photo 7



Photo 8



Photo 9



Photo 10



Photo 11



Photo 12



Photo 13



Photo 14

### Sword Belt Additional Reference Photos



Photo R



Photo R-1



Photo R-2



Photo R-3



Photo R-4



Photo R-5



Photo R-6



Photo R-7

Photo R-8

Photo R-9

### **Frog. Sword Belt**

Leather shall be semi-rigid, 10 to 12 ounces in thickness, high grade cowhide, dyed black. Approximate dimensions shall be 5-1/4 inch tall by 2-7/8 inch wide at the widest point and 2-1/8 inch wide at the top. The finished item shall be similar in style and shape to the item pictured in photos 1, 2, 3 & 4.

Frog opening shall accommodate at least a 5.5cm wide belt. Stitching shall be similar to the stitching in the photos. Stitching strength shall be sufficient to withstand heavier than normal use and wear.

The leather shall be free from imperfections affecting its appearance or serviceability. The leather shall be hand boarded cowhide, vegetable tanned, leather filled body and drum-dyed black throughout. The color shall be black and shall show fair fastness to crocking, staining and perspiration.

The sword/scabbard slot shall be "T" shaped with approximately a 1-1/2 inch opening at the top and a 1-5/8 inch vertical opening resembling the opening in Photo 1. The bottom of the T opening shall be approximately 3/4 inch above the bottom of the Frog. The bottom opening shall be approximately 2 inches wide.



Photo 1



Photo 2



Photo 3



Photo 4

### **Sword Belt Buckle Emblem & Belt Buckle Keeper**

Buckle Emblem dimensions:

- Over all length shall be 6.5cm across center of Buckle Emblem and belt loop lengthwise and 5.1cm tall measured from the top of the belt loop end to the bottom of the belt loop.
- Buckle emblem containing the Athena Helmet and wreath shall be 2 inches in diameter with a belt loop assembly as part of the emblem. The helmet shall face left toward the belt loop. (see photo 8)
- The belt loop (keeper) inner height shall be sufficient to allow the belt to pass through and the opening at the bowed center (widest point) shall be sufficient enough to allow passing the belt and the size adjustment post to pass through.
- The finished product shall resemble the item in photo 8 and 9.

Buckle Keeper:

- The Buckle Keeper piece shall be approximately 5cm tall and approximately 3cm wide at the widest point. The keeper inner area shall be approximately 4.3cm tall and .6cm wide, ample enough to allow the belt through and strong enough to withstand heavy wear. The smaller clasp hook receiver inner area shall be sufficient to allow the clasp to easily hook into and secure the belt for wear. The finished piece shall resemble the item in photo 10.

Metal Components:

- The Buckle-Emblem assembly and Buckle keeper piece shall be Die Struck Brass.



- The back of the buckle shall have a clasp durably and permanently attached to hook into the keeper. This clasp must be attached in such a way to withstand heavy usage and more than normal wear stress. The clasp hook shall be approximately 1cm wide by 2 cm long and shall be positioned so as to allow clasp to easily hook into and stay attached during wear to the buckle keeper. (photo 10)
- Performance Specification:
  - KEEPER: The keeper shall have the month and year struck into its backside. The contractor shall warrant the keeper against more than a two percent (2%) breakage over a five (5) year time period. In the event of breakage the customer shall collect the broken keepers. If more than two percent of the keepers from any single year fail the customer shall contact the contractor for return for replacement instructions.
  - BUCKLE: Performance Specification: The buckle shall have the month and year struck into its backside. The contractor shall warrant the keeper against more than a two percent (2%) breakage over a five (5) year time period. In the event of breakage the customer shall collect the broken keepers. If more than two percent of the keepers from any single year fail the customer shall contact the contractor for return for replacement instructions. This warranty will include breakage of the keeper clasp.

**Sword Belt Buckle Emblem & Buckle Keeper Photos**



Photo 8

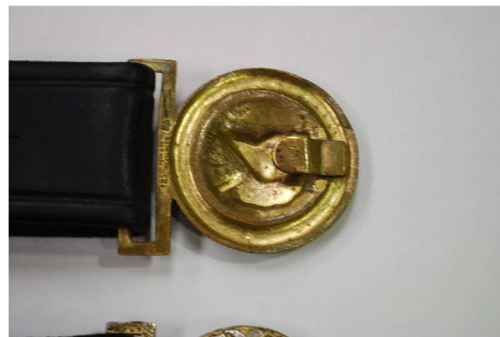


Photo 9



Photo 10

### **Belt, Buckle & Frog Evaluation Criteria**

1. Items, (Belt, Buckle & Frog will be inspected visually to ensure compliance with the written specification. The items shall be measured and checked against the specification.
2. The Frog will be fitted onto the belt from the keeper side by inserting belt through the loop on the Frog. We will test for a snug fit over the belt keeper and check to ensure the Frog moves freely once on the belt
3. The Frog shall be tested by inserting the sword and scabbard into the Frog as intended to ensure that the Frog will hold the sword as intended without ripping or tearing of the leather or ripping out stitching. We will ensure that the Frog maintains an ample hold or grip on the scabbard to keep it in place as the sword is drawn.
4. The Belt & Frog will be inspected for defects in the leather. Items shall be free from defects.
5. The Belt will be inspected and tested for adjustability and ensure that the size adjustment post will fit into and remain firmly in place once inserted into the size adjustment holes.
6. The Buckle will be inspected and shall be consistent with the provided photos. We will inspect for a shiny appearance on the Athena Helmet with a matte background with a checkered appearance. We will check for the date stamp as specified. We shall subject the Buckle clasp to a stress test conducted by a representative prying up and pressing down with their finger or thumb in an attempt to break the clasp from the buckle. Breakage of the clasp will result in failure of the item to meet requirements and the offer will be rejected.
7. We will inspect the Belt Flap for compliance with specification, durability and strength. We shall tug with reasonable force to check for weakness. Flap should withstand moderate pressure from pulling away from belt. Stitching should hold fast.
8. The leather belt loops will be tested for strength and durability by gripping on side opposite of seam, while on belt and attempting to pull away from belt with moderate force. Loop shall withstand force and remain on belt. Breakage would result in offer being rejected.



## Representations and Certifications

- The Government INTENDS to award a Firm Fixed Price contract resulting from this solicitation to the responsible offeror whose quote conforms to the solicitation. It is an Offeror's responsibility to ensure their SAM UID# Profile is CURRENT & ACTIVE
- As a result of interim FAR rule 2019-009, published on July 14, 2020, and effective on August 13, 2020, implementation of the Section 889(a)(1)(B) Prohibition on Contracting with Entities Using Certain Telecommunications and Video Surveillance Services or Equipment Clauses.

Please ensure the SAM Profile properly reflects your representations on FAR 52.204-24, 52.204-25, and 52.204-26.

- NOTE: Buy American

**Offerors MUST identify the Country of Origin for the goods and materials you are supplying:**

--Goods (Final Product; Apparel, Article, Merchandise, Component, Gadget, Utensil, Instrument, etc.)

--Materials (Materials Used to Manufacture; Fabric, Cloth, Metals, Plastics, Wood, Yarn, etc.)

- LEAD TIME

**Upon time and date of award, identify the estimated time of delivery for the items noted in the CLINs?**

CLIN 0001

CLIN 0002

CLIN 0003

## INSTRUCTIONS TO OFFERORS

All offerors interested in submitting a quote for this requirement need to follow these instructions. If an offeror does not comply with these instructions, they shall be excluded from consideration contract award.

In order to be considered, all offerors interested in submitting a quote for this requirement **MUST** submit one (1) product sample of each, Cadet Sword Belts and Sword Frog.

➤ Product Sample(s)

One (1) Large Sword Belt, One (1) Small Sword Belt, and One (1) Sword Frog, in accordance with the specifications, for which they are submitting a quote.

➤ The samples **must** contain the following information:

1. Name of Offeror
2. Contact Name (First & Last)
3. Mailing Address, City, State, Zip Code
4. Direct Phone Number
5. Email Address.
6. Please include the Solicitation Number (W911SD-23-R-0038) on package.

➤ All samples shall be submitted on or **BEFORE THE CLOSING DATE AND TIME** identified in block 8 of the SF1449 to the following address:

U.S. Army West Point Military Academy  
Mission and Installation Contracting Command – West Point  
Attn: Ignacio Cordova  
CCMI-CEU-WP  
681 Hardee Place, Room 104  
West Point, NY 10996.  
845-938-3120

➤ All vendors submitting samples are required to submit tracking information. Please email tracking information to [ignacio.j.cordova2.civ@army.mil](mailto:ignacio.j.cordova2.civ@army.mil)

**THE GOVERNMENT SHALL MAKE ONE CONTRACT AWARD WITHOUT DISCUSSIONS. THEREFORE, IF AN OFFEROR DOESN'T SUBMIT A SAMPLE WITH THEIR PROPOSAL, THEY SHALL NOT RECEIVE CONSIDERATION FOR CONTRACT AWARD. THE GOVERNMENT SHALL NOT BE LIABLE FOR ANY LOST OR MISDIRECTED PROPOSAL AND OR SAMPLES.**

## ADDENDUM to FAR 52.212-2 EVALUATION--COMMERCIAL ITEMS

Provisions that are incorporated by reference (by Citation Number, Title, and Date), have the same force and effect as if they were given in full text. Upon request, the Contracting Officer will make their full text available.

The following provisions are incorporated into 52.212-2 as an addendum to this solicitation:

### Evaluation Factors for Award

- (a) **Basis for Contract Award.** This is a Lowest Price Technically Acceptable source selection conducted in accordance with Federal Acquisition Regulation (FAR) 13.106-2, Evaluation of quotations or offers, as supplemented by the Defense Federal Acquisition Regulation Supplement (DFARS), and the Army Federal Acquisition Regulation Supplement (AFARS). Contract shall be awarded to the contractor who is deemed responsible in accordance with the FAR, as supplemented, whose quote conforms to the solicitation's requirements (to include all stated terms, conditions, representations, certifications, and all other information required by 52.212-2 of this solicitation and is judged by an overall assessment of the evaluation factors to represent the most advantageous to the Government by exceeding the minimum requirements to meet the Lowest Price Technically Acceptable.
- (b) **Award for All of the Work.** The Government intends to award one (1) Firm Fixed Price (FFP) contract as a result of this solicitation. Quotes received for less than the stated number of items listed in the Price Schedule will be considered ineligible for award. As set forth in FAR 52.212-1 (g), the Government intends to evaluate quotes and award a contract without discussions with contractors. Therefore, the contractor's initial quote should contain the contractor's best terms from a price and technical standpoint. The Government reserves the right to conduct discussions if the Contracting Officer later determines them to be necessary.
- (c) **Evaluation Criteria.** The Sample in accordance with specifications and criteria; One (1) Large Sword Belt, one (1) Small Sword Belt, and one (1) Sword Frog, shall be evaluated under two (2) evaluating factors: Technical, and Price.

**Factor 1 - Technical.** The Sample in accordance with specifications and criteria; One (1) Large Sword Belt, One (1) Small Sword Belt, and One (1) Sword Frog will receive one of the ratings defined below.

<b>Table 1. Technical Rating(s) Acceptable/Unacceptable Ratings</b>	
<b>Rating</b>	<b>Description</b>
Acceptable	SAMPLE(S) clearly meets the minimum specifications/requirements of the solicitation.
Unacceptable	SAMPLE(S) does <b>NOT</b> clearly meet the minimum specifications/requirements of the solicitation.

**Factor 2 – Price.** Price will not be scored or rated. Evaluation of price will be performed using one or more of the price analysis techniques in FAR 13.106-3(a). Through these techniques the Government will determine whether prices are reasonable.

### Belt, Buckle & Frog Evaluation Criteria

1. Items, (Belt, Buckle & Frog will be inspected visually to ensure compliance with the written specification. The items shall be measured and checked against the specification.
2. The Frog will be fitted onto the belt from the keeper side by inserting belt through the loop on the Frog. Evaluators will test for a snug fit over the belt keeper and check to ensure the

Frog moves freely once on the belt

3. The Frog shall be tested by inserting the sword and scabbard into the Frog as intended to ensure that the Frog will hold the sword as intended without ripping or tearing of the leather or ripping out stitching. We will ensure that the Frog maintains an ample hold or grip on the scabbard to keep it in place as the sword is drawn.
4. The Belt & Frog will be inspected for defects in the leather. Items shall be free from defects.
5. The Belt will be inspected and tested for adjustability and ensure that the size adjustment post will fit into and remain firmly in place once inserted into the size adjustment holes.
6. The Buckle will be inspected and shall be consistent with the provided photos. Evaluators will inspect for a shiny appearance on the Athena Helmet with a matte background with a checkered appearance. Evaluators will check for the date stamp as specified. Evaluators shall subject the Buckle clasp to a stress test conducted by a representative prying up and pressing down with their finger or thumb in an attempt to break the clasp from the buckle. Breakage of the clasp will result in failure of the item to meet requirements and the offer will be rejected.
7. Evaluators will inspect the Belt Flap for compliance with specification, durability and strength. Evaluators shall tug with reasonable force to check for weakness. Flap should withstand moderate pressure from pulling away from belt. Stitching should hold fast.
8. The leather belt loops will be tested for strength and durability by gripping on side opposite of seam, while on belt and attempting to pull away from belt with moderate force. Loop shall withstand force and remain on belt. Breakage would result in offer being rejected.

**\*SEE ATTACHED DOCUMENTS FOR COMPLETE SPECIFICATIONS, DETAILS & INSTRUCTIONS\***

**IT IS THE OFFEROR'S RESPONSIBILITY TO REVIEW ALL ATTACHMENTS PERTAINING TO THIS SOLICITATION.**