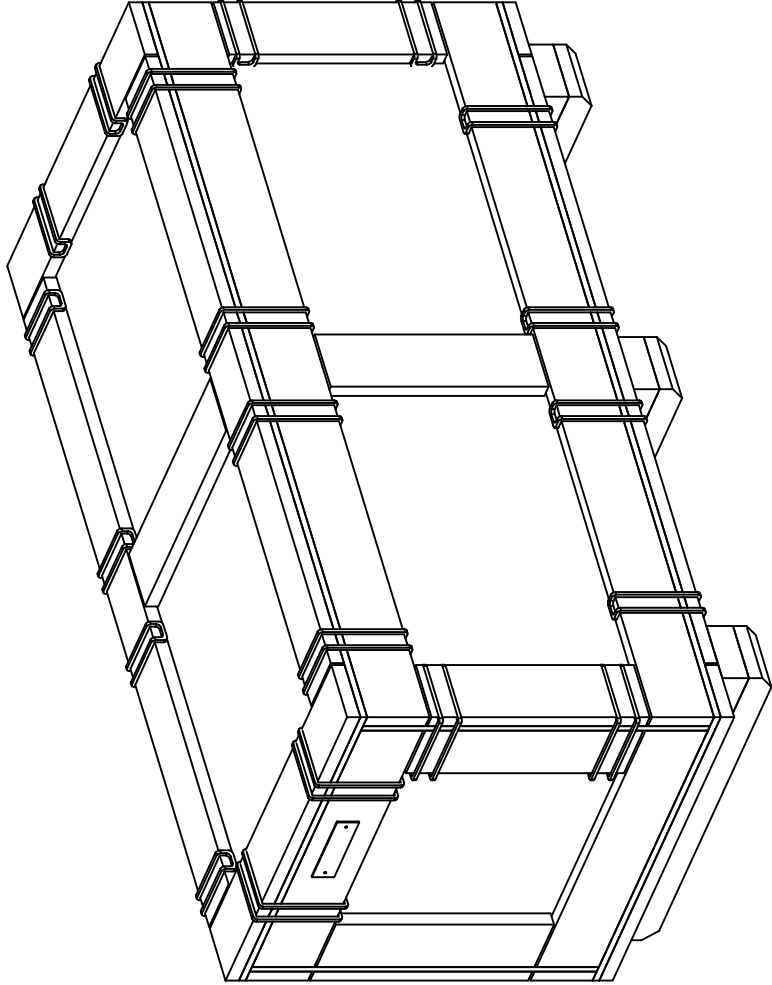


DESCRIPTION: SHIPPING CONTAINER PER ASTM-D6251 (PPP-B-601)
OUTSIDE DIMENSIONS: 48" X 21-3/4" X 24-3/4"
INSIDE DIMENSIONS: 453/4" X 191/2" X 191/2"
CUBE = 14.9 CU FT.

USAGE: FOR SHIPMENT AND STORAGE OF THE HARPOON MISSILE WARHEAD
AND EXERCISE SECTION



PACKAGING, HANDLING, STORAGE, AND TRANSPORTABILITY ENGINEERING

TITLE

SHIPPING CONTAINER – WARHEAD – HARPOON MISSILE

MIL NO

MIL NO

SCALE

NONE

SIZE

A

DWG NO

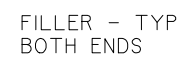
SC72B129000-1001

SHEET

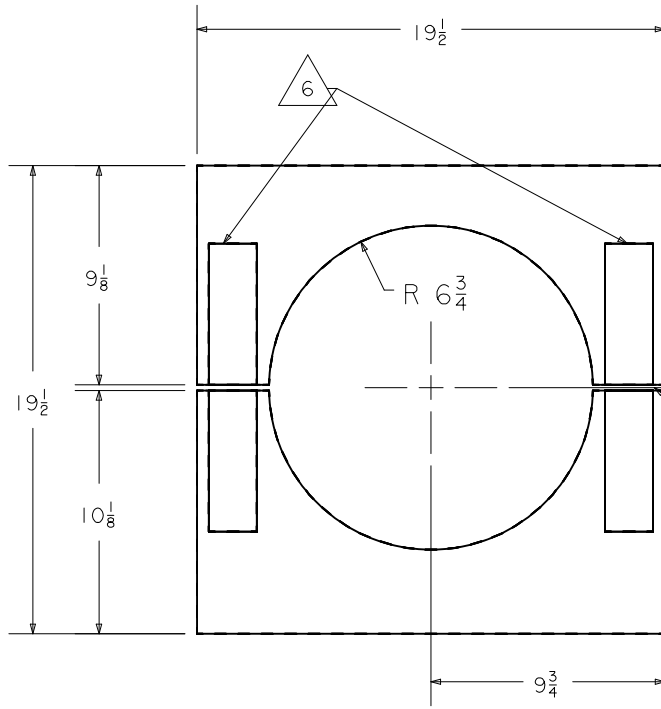
1



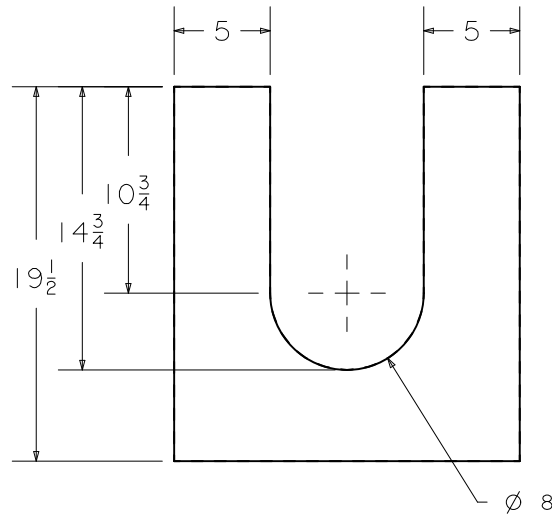
BOX CONFIGURATION



SHEET
2



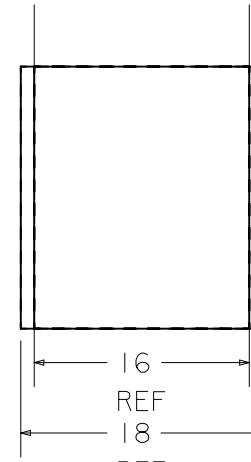
DETAIL 7



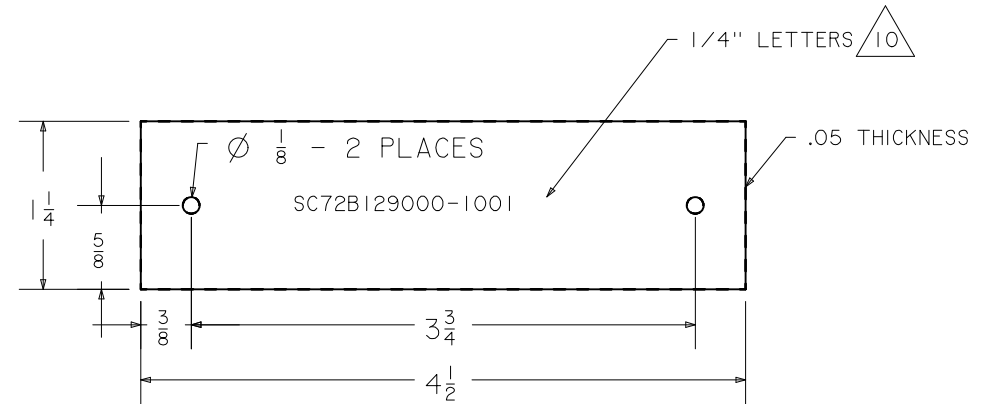
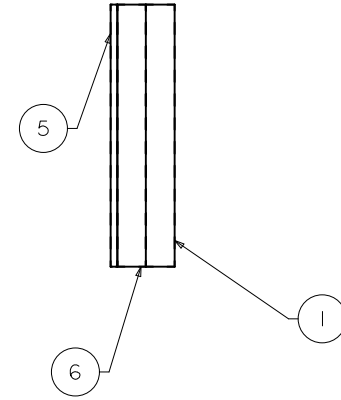
DETAIL 2



THICKNESS
AS REQUIRED
TO SATISFY
38" CRITICAL DIM.

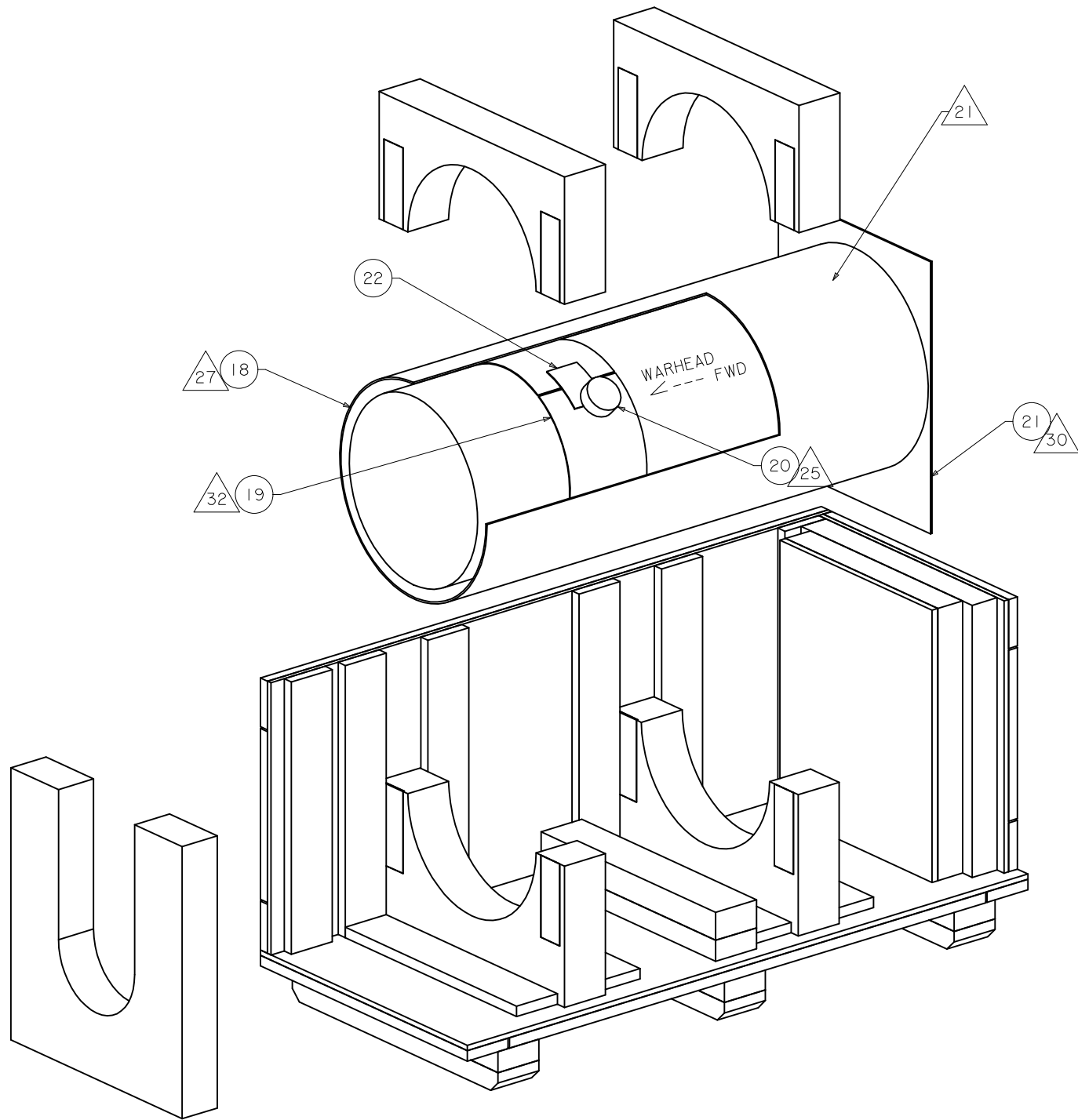


DETAILS 1, 5, 6



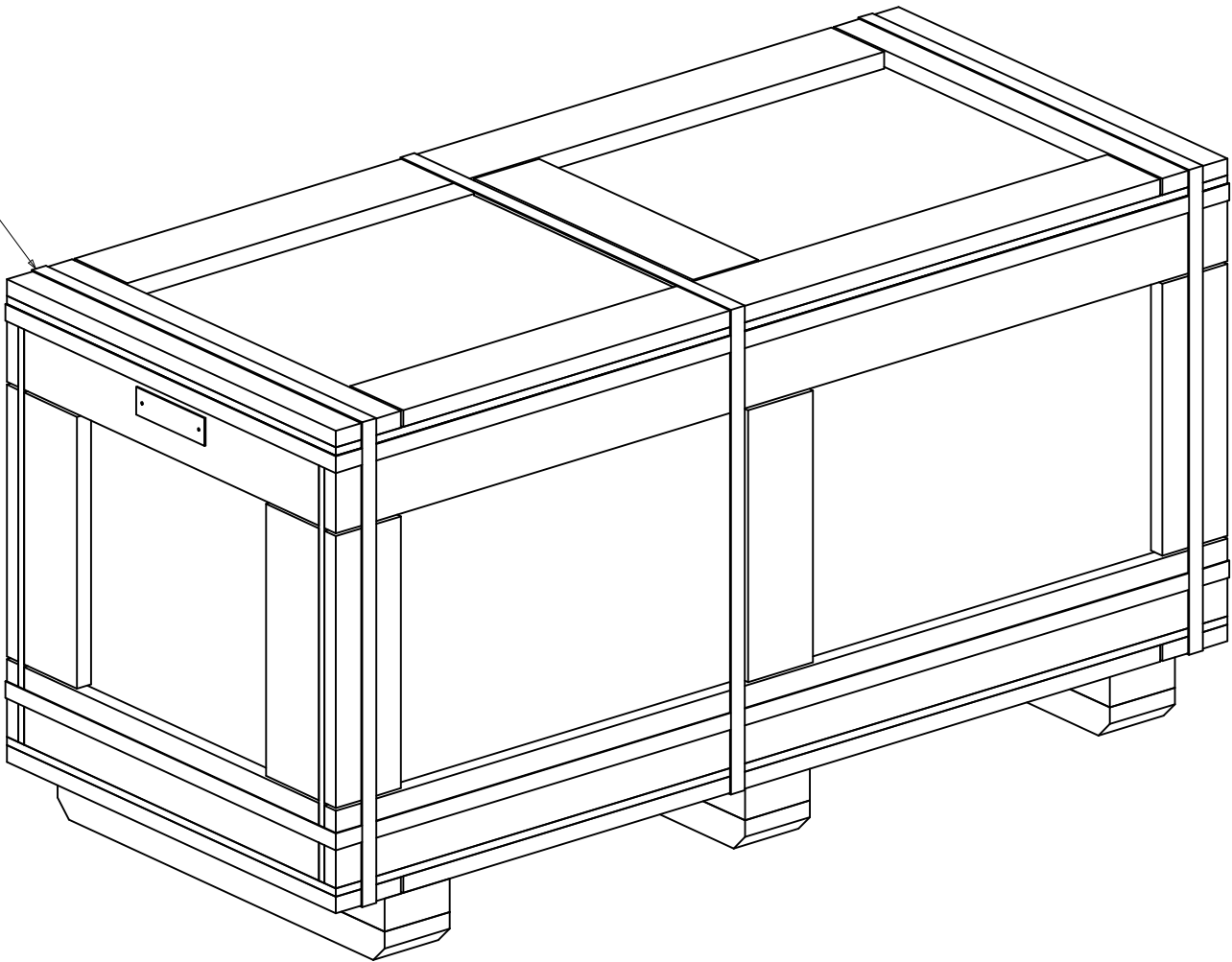
DETAIL 11

		PACKAGING, HANDLING, STORAGE, AND TRANSPORTABILITY ENGINEERING	
		TITLE	
		SHIPPING CONTAINER,	
SCALE	SIZE	DWG NO	SHEET
NONE	A	SC72B129000-1001	3



PACKAGING, HANDLING, STORAGE, AND TRANSPORTABILITY ENGINEERING			
TITLE			
SHIPPING CONTAINER,			
SC-...	D-...	DWG NO	SHEET
NONE	A	SC72B129000-1001	4

31 17

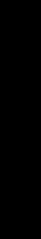


VIEW SHOWING BANDING BEFORE KLIMP APPLICATION

SCALE NONE		SIZE A		PACKAGING, HANDLING, STORAGE, AND TRANSPORTABILITY ENGINEERING	
				TITLE	
SCALE NONE		SIZE A		SHIPPING CONTAINER,	
				DWG NO	SHEET
				SC72B129000-1001	5

REVISION N				
25	A/R	ANTISTATIC FILM	APPROX. 4 MIL	MIL-PRF-81705 TYPE II
24	A/R	TOPICAL ANTISTAT	-----	"RESQUE" SUPPLIED BY RILEY & BEEHR, OR EQ.
23	32	DESSICANT	UNITS	MIL-D-3464 TYPE I
22	A/R	TAPE	3" WIDE	PPP-T-60 TYPE IV CLASS 1
21	A/R	CUSHION	1/8" THICK	PPP-C-1752 TYPE I CLASS 2 (STATIC FREE)
20	1	HUMIDITY INDICATOR	PLUG TYPE	MIL-I-26860 TYPE II
19	1	CUSHION	43 X 8 X 1/8	PPP-C-1752 TYPE I CLASS 2 (STATIC FREE)
18	1	BARRIER	50 X 59	MIL-PRF-81705 TYPE I
17	A/R	STRAPPING	3/4 WIDE	METAL BANDING
16	1	CUSHION	2(ACT) X 191/2 X 31/2 - ETHAFOAM	PPP-C-1752 TYPE V 9-10.5 LB DENSITY RANGE
15	1	BLOCKING	2 X 4(NOM) X 191/2	LUMBER
14	20	KLIMP FASTENER	NO. 4	MS-24535
13	2	FILLER	1 X 4(NOM) X 141/2	LUMBER
12	A/R	PRIMER	-----	MIL-P-23377
11	2	NAME PLATE	41/2 X 11/4 X .05	ALUMINIUM 6061 OR EQUIV.
10	3	RUB STRIP	2 X 4(NOM) X 215/8	LUMBER
9	4	CLEAT	1 X 4(NOM) X 18	LUMBER
8	A/R	ADHESIVE	-----	MMM-A-1617 OR EQUIV.
7	2	STATION	191/2 X 191/2 X 31/2 - ETHAFOAM	PPP-C-1752 TYPE V 9-10.5 LB DENSITY RANGE
6	1	END CUSHION	19 1/2 X 16 X 2(NOM) - ETHAFOAM	PPP-C-1752 TYPE I 2-2.6 LB DENSITY RANGE
5	1	PLATEN	191/2 X 16 X 1/2	PLYWOOD
4	12	CLEAT	1 X 4(NOM) X 191/2	LUMBER
3	3	FILLER	2 X 4(NOM) X 215/8	LUMBER
2	1	END CUSHION	19 1/2 X 18 X A/R - ETHAFOAM	PPP-C-1752 TYPE I 2-2.6 LB DENSITY RANGE
1	1	END CUSHION	19 1/2 X 18 X 2(NOM) - ETHAFOAM	PPP-C-1752 TYPE I 2-2.6 LB DENSITY RANGE
FIND NO	QTY	NAME	SIZE / DESCRIPTION	MTL / SPEC
TITLE				
PACKAGING, HANDLING, STORAGE, AND TRANSPORTABILITY ENGINEERING				
SHIPPING CONTAINER - WARHEAD - HARPOON MISSILE				
SCALE NONE	SIZE A	DWG NO	SC72B129000-1001	
			SHEET	6

-

TITLE		SHIPPING CONTAINER – WARHEAD – HARPOON MISSILE	
SCALE NONE	SIZE A	DWG NO 	SHEET 7

- 33

PRIOR TO PACKING, SPRAY ALL EXPOSED SURFACES OF DETAILS 1,2,6,& 7 WITH A TOPICAL ANTISTAT (DETAIL 24).
ALLOW TO DRY.
- 32

WRAP DETAIL 19 AROUND WARHEAD THEN SECURE WITH TAPE(DETAIL 22) AS ILLUSTRATED.
- 31

POSITION TWO HORIZONTAL STRAPS FIRST THEN THREE GIRTHWISE STRAPS. STRAPS SHOULD BE POSITIONED UNDER KLIMP FASTENERS WHEN APPLICABLE.
- 30

POSITION DETAIL 21 BETWEEN BAG AND PLYWOOD END PLATE(DETAIL 5) TO ELIMINAT BAG AND PRODUCT ABRASION.
29.

DO NOT USE THIS CONTAINER FOR EXPORT SHIPMENT WITHOUT PRIOR APPROVAL FROM HMC.
28.

REMOVED
- 27

FORM BARRIER BAG SIDE AND BOTTOM SEALS ON HEAR SEALER. AFTER INSTERING WAHEAD MAKE FINAL TOP CLOSURE BY FOLDING THE EDGE OF THE BAG TWICE THEN SEALING WITH DETAIL 22.
~~DO NOT~~ USE HEAT SEALER ONCE WARHEAD IS BAG.
- 26

CUSHION SHARP EDGES WITH DETAIL 21 BEFORE BAGGING.
- 25

LOCATE MIL-I-26860 HUMIDITY INDICATOR AS SHWN IN DETAIL 18 OVER DETAIL 19 AND TIGHTEN WITH WRENCHES.
LOCATE AFTER WARHEAD IS IN BAG BUT PRIOR TO SEALING TO BE CERTIAN OF PROPER ALIGNMENT
(APPROX. CENTER OF DETAIL 19)
24.

FOR LEVEL C PACK, OMIT DETAILS 18, 20, & 23
23.

LEVEL A & B, PRESERVE & PACKAGE METHOD IIC PER MIL-P-116
22.

WEIGHT OF PART = 500 LBS
- 21

LOCATE DEISSICANT IN THIS AREA. PLACE DETAIL 23 IN STATIC FREE FILM (DETAIL 25) TO PREVENT THE DESICCANT FROM CONTACTING THE PART, LEAVE THE ENDS OPEN.

PACKAGING NOTES:

TITLE	
SHIPPING CONTAINER – WARHEAD – HARPOON MISSILE	
SCALE NONE	SIZE A
DWG NO SC72B129000-1001	
SHEET 8	

CONTAINER CUTTING LIST

SPECIFICATION ASTM-D6251, Type III Style A (PPP-B-601)

INTERIOR DIMENSIONS 45-3/4 x 19-1/2 x 19-1/2

APPROX. WOOD WEIGHT 59.5 lbs

Qty	Size	Quantity Where Used					Description
		Side1	Side1	End1	End2	Top Bottom	
2	3/8 x 48 x 19-1/2	1	1				PLYWOOD – Panel
2	3/8 x 19-1/2 x 19-1/2			1	1		PLYWOOD – Panel
2	3/8 x 48 x 21-3/4				1	1	PLYWOOD – Panel
4	1 x 4(NOM) x 48	2	2				LUMBER – Cleat
10	1 x 4(NOM) x 12-1/4	3	3	2	2		LUMBER – Cleat
4	1 x 4(NOM) x 19-1/2			2	2		LUMBER – Cleat
4	1 x 4(NOM) x 40-3/4					2	LUMBER – Cleat
4	1 x 4(NOM) x 21-3/4					2	LUMBER – Cleat
2	1 x 4(NOM) x 14-1/2					1	LUMBER – Cleat