

STATEMENT OF WORK (SOW) FOR 193 LRS Dock Locks

PENNSYLVANIA AIR NATIONAL GUARD (PAANG) UNIT/DIRECTORATE

DATE: 27 April 2023

TITLE: Dock Locks

1. PURPOSE. Dock locks are required to ensure safety of equipment and personnel by securing delivery vehicle trailers while parked. These locks play a pivotal role in preventing the premature departure of engaged vehicles.

2. SCOPE OF WORK. The contractor shall provide all materials and support necessary to remove, dispose of old equipment and replace with new equipment In Accordance With the quantities and specifications outlined in this statement of work.

Building 79- One, of two, dock lock has already been removed by the government and the other dock lock shall be removed by the contractor. Two exterior lights and controls panels shall be removed, disposed, and replaced by the contractor.

Building 36- The dock lock has already been removed by the government. The contractor shall remove, dispose, and replace one control light and control panel.

3. DELIVERY LOCATION AND DELIVERY DATE. All equipment shall be delivered to, and installed, at the 193rd Special Operations Wing, located in Middletown, PA 17057. *Please note there are two install locations, listed in paragraph 4.*

4. QUANTITY REQUIRED: 3 Dock locks, 2 exterior lights, and 3 control panels.

Installation Locations:

2 EA Dock Locks (as outlined in paragraph 5.1), Control Panel and Lights, to be installed at 79 Mustang Alley, Middletown, PA 17057

1 EA Dock Lock (as outlined in paragraph 5.2), Control Panel and Lights, to be installed at 36 Box Car Road, Middletown, PA 17057

5. SPECIFICATIONS REQUIRED.

5.1

- QTY (2) Standard trailer actuated vehicle restraints, which include the following salient characteristics:
- Internal Control panel shall be a Standard Control Panel and Lights with push button controls, 115V/1PH operation, NEMA 4/12 controls panel, all components are UL (Underwriters Laboratory Inc., Standard for Safety) listed and/or recognized & manufactured in-house in UL approved shop.

- Exterior lights shall be low profile, traffic style, red/green LED standard and include a set of caution signs.
- Interior control panel LED lights in opposition to exterior lights, "enter on green light only" clearly visible on control panel.
- Advanced communication 3 light system with yellow caution light in addition to red/green automatically alerts dock attendant if no RIG bar with activation of yellow caution light, bypass mode standard and is keyed override system.
- Must contain Interlock terminals for leveler interlock, with an operating range of 3" to 10" horizontally from face of dock bumpers with a 9" to 30" vertical range.
- Must withstand an average pulling force of at least 30,000 pounds.
- Dock Locks shall be wall mounted, upon installation.
- All components must meet all NHTSA regulations.
- Contractor shall install one, approximate 50" by 18" steel plate that is ½" thick over the damaged portion of the dock wall. Installing this plate will create a flush mounting space for the replacement dock lock to be installed. See Exhibit 3 for pictures.

5.2

- QTY (1) Standard trailer actuated vehicle restraints, which include the following salient characteristics:
- Internal Control panel shall be standard with push button controls, 115V/1PH operation, NEMA4/12 controls panel, all components are UL listed and/or recognized & manufactured in-house in UL with yellow caution light in addition to red/green automatically alerts dock attendant if no RIG bar with activation of yellow caution light, bypass mode standard and is keyed override system.
- Must contain Interlock terminals for leveler interlock, with an operating range of 3" to 10" horizontally from face of dock bumpers with a 9" to 30" vertical range.
- Must withstand an average pulling force of at least 30,000 pounds. 5
- Contractor shall Install dock bumpers.
- Dock Lock shall be wall mounted, upon installation.
- All components must meet all NHTSA regulations.

5.3 Vendor shall dispose of all old equipment, off site.

5.4 Furnishing of operation and maintenance manual & warranty required.

5.5 All work shall be completed during normal business hours (0800-1600), Monday through Friday. The contractor shall not schedule or conduct installation on Federal Holidays, as outlined, below. The contractor shall provide at least 72 hours' notice to the Government Point of Contact, prior to the project start date.

New Year's Day: January 1st
 Martin Luther King, Jr.'s Birthday
 President's Day
 Memorial Day
 Juneteenth: June 19th
 Independence Day: July 4th

Labor Day
Columbus Day
Veteran's Day: November 11th
Thanksgiving Day
Christmas Day: December 25th

5.6 Power wiring, including disconnect if required will be conducted by the contractor. Installation will include low voltage control wiring by vendor. Any power interruptions shall be communicated to the Government POC, no less than 24 hours prior to the scheduled outage. All wiring shall be surface mounted in standard galvanized 1/2" EMT and flex conduit. Any other types of conduits, boxes or fittings required for this project shall be provided and installed by the contractor. Should additional wiring outside already established routings be required for installation, contractor will contact Government POC prior to installation. Government POC will contact CES for awareness and additional approval (if required).

EXHIBIT 1- Pictures

Visual of Docks Locks and associated equipment; Located at 79 Mustang Alley, Middletown,
PA

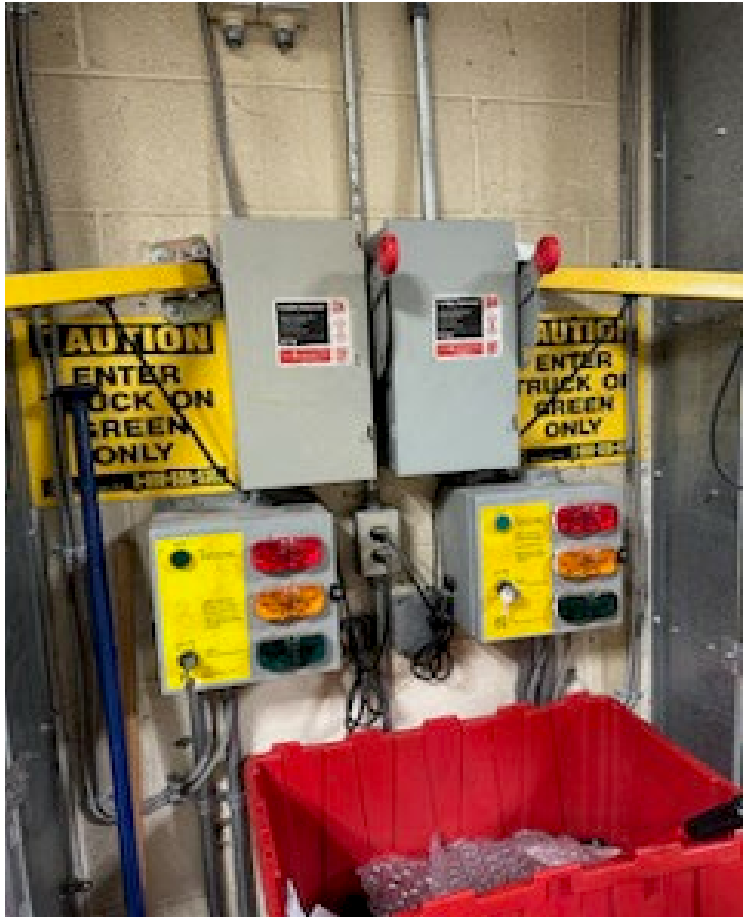




Exhibit 2

Visual of Docks Lock (1EA) and associated equipment; 36 Box Car Road, Middletown, PA
17057





Exhibit 3

Installation of Dock Lock Steel Plate

