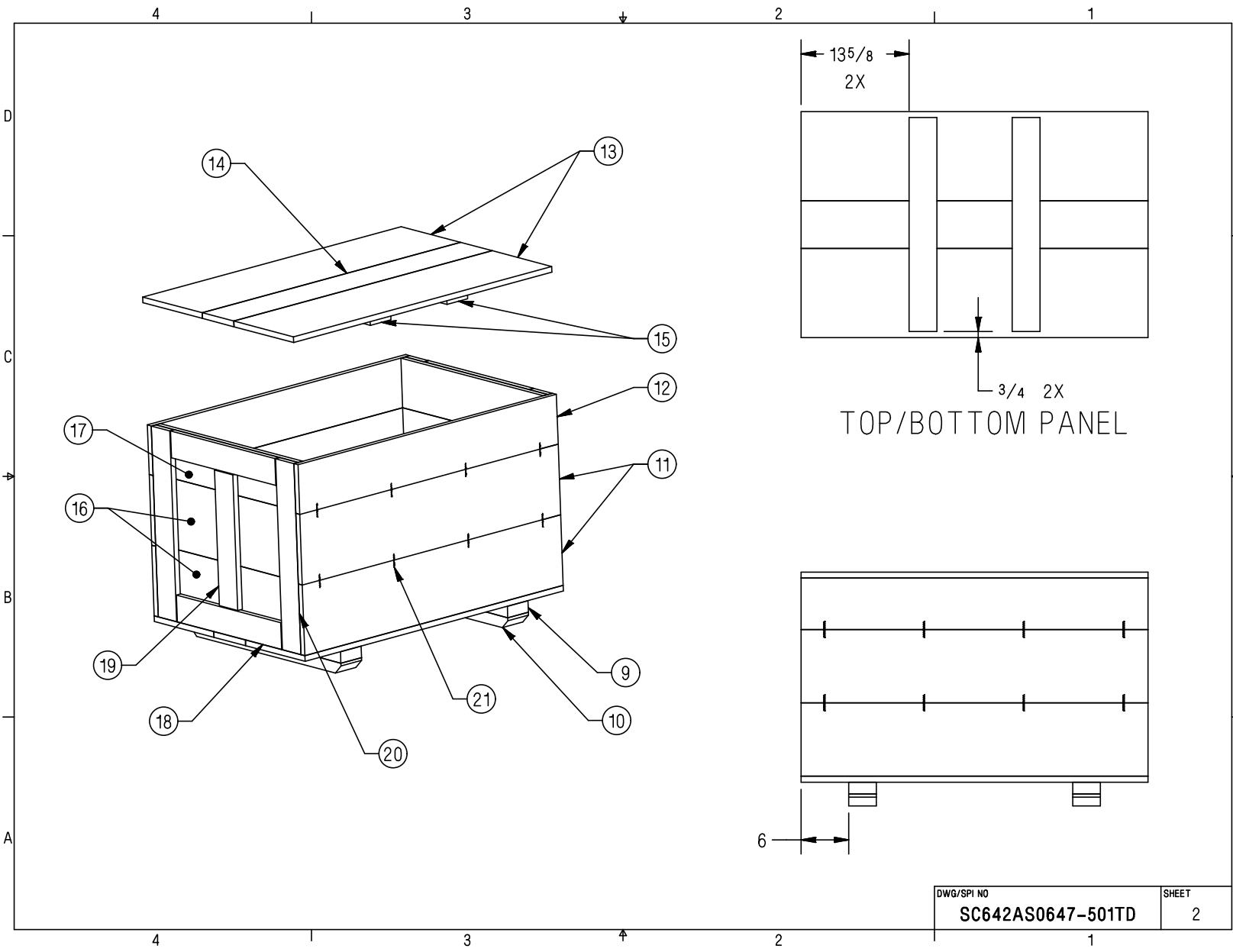
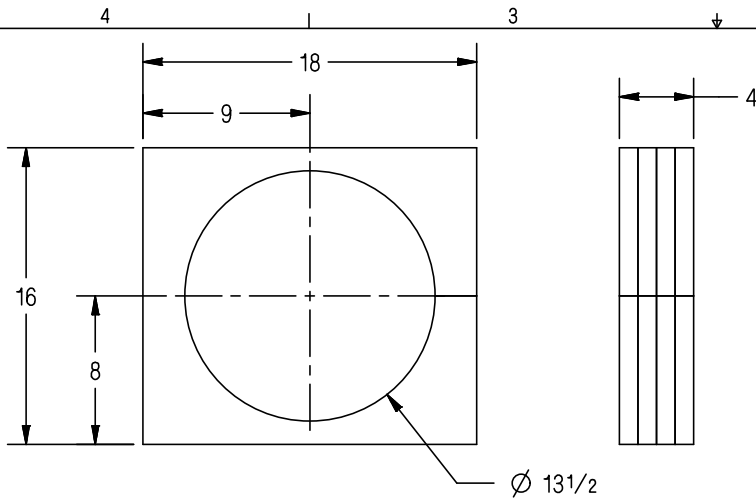


<div></div> <p>THIS MATERIAL MAY BE REPRODUCED BY OR FOR THE U. S. GOVERNMENT PURSUANT TO THE COPYRIGHT LICENSE UNDER THE CLAUSE AT DFARS 252.227-7013</p>	UNLESS SPECIFIED		CONTAINER OUTSIDE DIMENSIONS		43 <sup>3</sup> / <sub>4</sub> X 28 <sup>1</sup> / <sub>2</sub> X 29 <sup>1</sup> / <sub>2</sub>		<div></div> <div>PACKAGING, HANDLING, STORAGE, AND TRANSPORTABILITY ENGINEERING</div> <div>TITLE</div> <div>SHIPPING CONTAINER, HARPOON BOOSTER SECTION</div> <div>DWG/SPI NO</div> <div>SC642AS0647-501TD</div> <div>SHEET</div> <div>1 OF 5</div>			
	ALL DIMENSIONS IN INCHES		CONTAINER INSIDE DIMENSIONS							
	TOLERANCES		CONTAINER SPECIFICATION		ASTM D6880, ST2, CL 2					
	FRACTIONS	± 1/8	CONTAINER WEIGHT	107 POUNDS	GROSS WEIGHT	420 POUNDS				
	.X	± .060	PART NUMBER / DESCRIPTION							
.XX	± .030	642AS0647 BOOSTER SECTION								
.XXX	± .010									
ANGLES	± 1/2°									

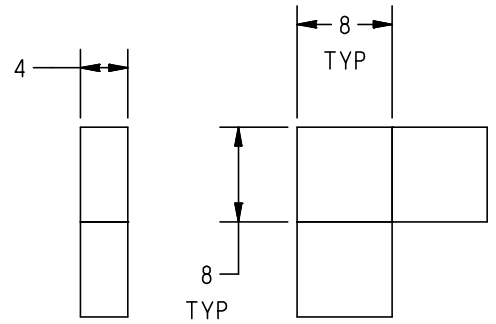


DWG/SPI NO  
**SC642AS0647-501TD**

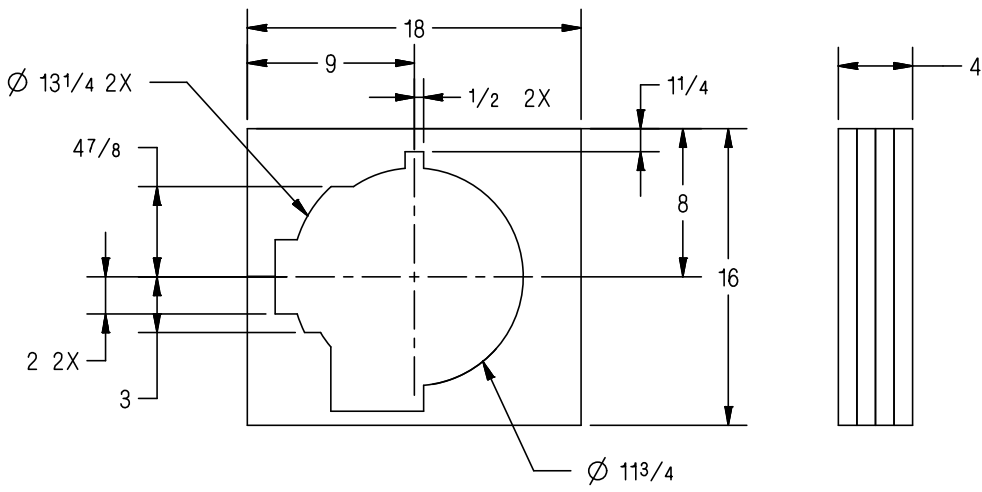
SHEET  
**2**



DETAIL 2



DETAIL 7



DETAIL 3

30			
29			
28			
27			
26			
25			
24			
23			
22			
21	16	CORRUGATED WOOD JOINERS	5/8 WIDE
20	4	END CLEAT	1 X 4(NOM) X 25
19	2	END CLEAT	1 X 4(NOM) X 173/4
18	4	END CLEAT	1 X 4(NOM) X 193/4
17	2	END PANEL	1 X 61/2 X 27
16	4	END PANEL	1 X 10(NOM) X 27
15	4	TOP/BOTTOM CLEAT	1 X 4(NOM) X 27
14	2	TOP/BOTTOM PANEL	1 X 6 X 433/4
13	4	TOP/BOTTOM PANEL	1 X 12(NOM) X 433/4
12	2	SIDE PANEL	1 X 61/2 X 433/4
11	4	SIDE PANEL	1 X 10(NOM) X 433/4
10	2	RUB STRIP	2 X 4(NOM) X 281/2
9	2	SPACER	2 X 4(NOM) X 281/2
8	5	STEEL STRAPPING	3/4 WIDE
7	8	CORNER PAD	16 X 16 X 4
6	32	UNITS DESICCANT	
5	1	BARRIER BAG	64 X 48
4	A/R	WRAP	A/R
3	1	CONTOUR	18 X 16 X 4
2	1	CONTOUR	18 X 16 X 4
1	1	PRIMARY CONTAINER	313/4 X 18 X 16 I.D.
FIND NO	QTY	NAME / DESCRIPTION	SIZE / PART NUMBER
			MATERIAL SPEC / SOURCE
DWG/SPI NO		SC642AS0647-501TD	
		SHEET	
		4	

NOTES:

1. CONSTRUCT CONTAINER PER SPECIFICATION ON SHEET 1, MODIFIED AS SHOWN.  
SEE LAST PAGE FOR MATERIALS CUTTING LIST (IF PRESENT).
2. USE MECHANICALLY DEFORMED (I.E. RING SHANKED OR SPIRAL) NAILS AND  
CLENCH NAILS WHERE APPLICABLE. STAPLES SHALL NOT BE USED.
3. UNLESS OTHERWISE SPECIFIED, PLYWOOD SHALL BE CDX PINE OR BETTER AND  
LUMBER SHALL BE #2 OR BETTER, SPF.
4. TO SATISFY THE WOOD PACKAGING MATERIALS (WPM) REQUIREMENTS  
USE ONLY HEAT-TREATED LUMBER AND MARK IN ACCORDANCE WITH IPPC ISPM-15.
5. VENDOR/SUPPLIER PART NUMBER IS THE SUGGESTED SOURCE AND AN EQUIVALENT  
PART WITH THE SAME PHYSICAL, FUNCTIONAL, AND PERFORMANCE CHARACTERISTICS  
FROM AN ALTERNATE SOURCE MAY BE USED, UNLESS OTHERWISE NOTED.
6. MARK CONTAINER WITH DRAWING/SPI NUMBER.
7. USE 2" GREEN DUCT TAPE (AC20 OLIVE IPG-IPG) FOR CLOSURE OF DETAIL 1.  

8 USE TAPE FOR FINAL CLOSURE OF DETAIL 5 FOR LEVEL A AND B.

9 STENCIL PRIMARY CONTAINER "NON SHIPPER".
10. MARK IAW MIL-STD-129.
- 11 OMIT DETAILS 5 AND 6 FOR LEVEL C ONLY.
12. WEIGHT OF PART 313 PONDS NET.
13. ITEM CLASSIFIED AS: ROCKET MOTOR – CLASS B EXPLOSIVE