

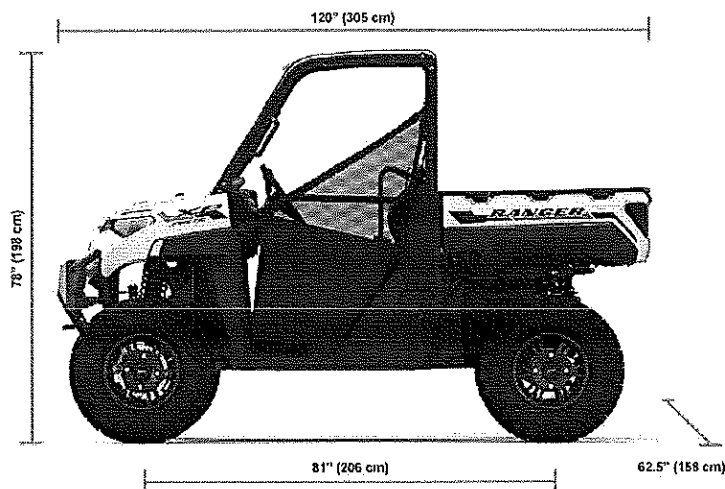
## RANGER XP Kinetic Premium Icy White Pearl Specifications

Find specifications below for the 2023 Polaris RANGER XP Kinetic Premium Icy White Pearl UTV. Specs include payload capacity, hitch type, towing capacity, engine, horsepower, ground clearance, turf mode, bed capacity, person capacity, instrumentation, tires, suspension and cargo system.

Change Model

### RANGER XP Kinetic Premium Icy White Pearl

**RANGER**



#### Key Specifications

**110**  
HP

**3**  
PERSON CAPACITY

**14"**  
GROUND CLEARANCE

### Engine & Drivetrain

Battery System	Lithium Ion, 14.9 kWh Nominal
Cooling	Active Air and Liquid
Drive System Type	High Performance On-Demand True AWD/2WD/VersaTrac Turf Mode
Engine Braking System (EBS)	Regenerative Braking
Horsepower	110 HP
Motor Type	Internal Permanent Magnet AC Motor
Torque	140 LB-FT
Transmission/Final Drive	Gates Synchronous Belt H/L/N/P (Electronic Forward/Reverse), Shaft

### Dimensions

<b>Bed Box Dimensions (L x W x H)</b>	36.75 x 54.25 x 12.5 in (93.3 x 137.8 x 31.75 cm)
<b>Box Capacity</b>	1,250 lb (567 kg)
<b>Estimated Dry Weight</b>	1,730 lb (785 kg) *Pre-production estimates and final vehicles weights may vary slightly
<b>Ground Clearance</b>	14 in (35.6 cm)
<b>Hitch Towing Rating</b>	2,500 lb (1,134 kg)
<b>Hitch Type</b>	Standard 2 in (5 cm) Receiver
<b>Overall Vehicle Size (L x W x H)</b>	120 x 62.5 x 78 in (305 x 158 x 198 cm)
<b>Payload Capacity</b>	1,500 lbs (680.4 kg)
<b>Person Capacity</b>	3
<b>Wheelbase</b>	81 in (206 cm)

## Brakes

<b>Front/Rear Brakes</b>	4-Wheel Hydraulic Disc with Dual-Bore Front Calipers
<b>Parking Brake</b>	Park in Transmission

## Additional Specifications

<b>Adjustable Driver Seat</b>	Standard
<b>Cargo System</b>	Lock & Ride®
<b>Charging Kit Included (EVSE)</b>	J1772, Combined Level 1 / Level 2 Mobile
<b>Color / Graphics</b>	Icy White Pearl
<b>Electronic Power Steering</b>	Standard
<b>Estimated Range</b>	45 Miles
<b>Instrumentation</b>	Driver's Side Dual-sweep Analog Dials w/ 4" Multi-Color LCD Rider Information Center: Power Use and Regen %, Battery State of Charge %, Range Remaining, Charging Rate, Battery Temperature, Motor Temperature, Accessory Voltage, Speedometer, Odometer, Tripmeter, Gear Indicator, Service Indicator and Codes, Programmable Service Intervals, Seat Belt Reminder, User Selectable Backlighting & Brightness, Clock
<b>Lighting</b>	Dual LED Headlamps, 1250lm low beam, 2300lm high beam, LED Front Accent Light with Charge Indicator, Dual LED Taillamps
<b>Onboard Battery Charger</b>	3 kW
<b>Other Standard Features</b>	Premium Cut & Sew Seats with Contoured Seatbacks and Embroidered Polaris Branding, Premium Steering Wheel and Interior Accents, Polaris Pulse Electrical System (6 position), DC Outlets, Dual USB Port, Cargo Box Located 12V SAE Port with In-Dash On/Off Switch
<b>RIDE COMMAND+</b>	Factory-Installed
<b>Tilt Steering</b>	Standard

## Tires / Wheels

Front Tires	29 x 9-14; PRO ARMOR X-TERRAIN
Rear Tires	29 x 11-14; PRO ARMOR X-TERRAIN
Tire Ply Rating	8 Ply Rated
Wheels	14 in. (35.6 cm) Aluminum

## Suspension

Front Suspension	Dual A-Arm 10 in. (25.4 cm) Travel
Rear Suspension	Dual A-Arm, IRS 10 in. (25.4 cm) Travel
Turning Radius	13.3 ft (406.4 cm)

*\*Estimated range for 3- seat RANGER XP Kinetic traveling at 25 mph with 250 lbs of cargo*



**Compare RANGER Models**



**Search All Polaris Inventory Near You**



**View Special Offers**



**Estimate Trade-In**



**Shop Accessories**

**\*\*Availability of some equipment, options and/or features, including Wi-Fi connectivity on Ride Command models, may be limited or not available due to global supply issues affecting our industry. Please continue to build your vehicle and request local dealer price but be sure to work with your local Polaris dealer to ensure the vehicle you purchase includes all expected features and equipment.**

All pricing, specifications, claims, and information contained on this website are based upon current knowledge available at time of publication and are subject to change without notice, and Polaris assumes no responsibility for changes in pricing or specifications. Polaris assumes no responsibility for any inaccuracies, opinions, or omissions on this website. ©2022 Polaris Inc.